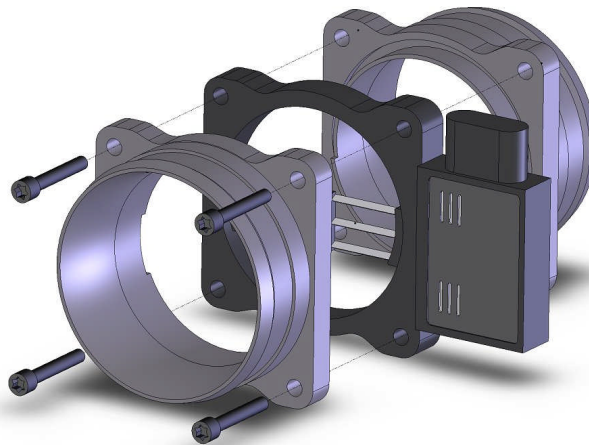




1.MAH100  
**Mass Air Housing Kit**



1. **Unplug and remove factory MAF Sensor.**
2. **Using a Torx T25, remove the four bolts that hold the MAF together.**
3. **Remove the O-rings from each of the two aluminum housing ends.**
4. **Place the O-rings in the new billet housing halves.**
5. **Cut the plastic vertical support out of the MAF sensor as shown on right side of picture using a hacksaw blade. Use a sharp knife to clean up the cut on the inside diameter.**
6. **Re-assemble the housing halves with the MAF sensor. Housing half only fit on one way.**
7. **Re-install the four bolts.**
8. **Replace the sensor in the air duct, noting air flow direction, and plug sensor back in.**

